



# BASILICA OF THE NATIONAL SHRINE OF MARY, QUEEN OF THE UNIVERSE

Very Reverend Robert E. Webster, *Rector*

## MASS SCHEDULE

### Daily Mass

Mon-Fri 12:00 PM

### Weekend Mass

Sat 6:00 PM

Sun 8:00 AM  
10:00 AM  
12:00 PM

## ADORATION OF THE BLESSED SACRAMENT

Mon-Fri 10:00 AM - 4:00 PM

Sat 10:00 AM - 4:00 PM

## RECONCILIATION

Mon-Fri 10:00 AM - 11:30 AM  
2:00 PM - 4:00 PM

Sat 10:00 AM - 4:00 PM

## GIFT SHOP

Mon-Tue CLOSED

Wed - Fri 10:00 AM - 3:00 PM

Sat 12:00 PM - 7:00 PM

Sun 8:00 AM - 2:00 PM

## OFFICE HOURS

Mon-Fri 10:00 AM - 5:00 PM

## BASILICA HOURS

Mon-Fri 10:00 AM - 5:00 PM

Sat 10:00 AM - 7:00 PM

Sun 7:00 AM - 2:00 PM

8300 VINELAND AVE.  
ORLANDO, FL 32821

(407) 239-6600  
MQUS.ORG

# Welcome

The roots for the founding of what was to become the Basilica of the National Shrine of Mary, Queen of the Universe go back to the very history of the settlement of central Florida. On August 22, 1990, the Feast of the Queenship of the Blessed Virgin Mary, ground was broken for this sacred space and was dedicated on the same day, three years later.

In 2004, a petition to the United States Conference of Catholic Bishops was granted and the Shrine was elevated from a diocesan to a National Shrine. In 2009, the Shrine was granted the designation of Basilica by Pope Benedict XVI.

Today this house of prayer continues to inspire those who come to worship, pray, and engage in quiet contemplation. Through the celebration of liturgy, prayer, the viewing of sacred art, the receiving of the Sacrament of Reconciliation, faithful from all over the world- pilgrims on a journey- including those living here in Central Florida find comfort, calm and spiritual renewal amidst the hectic pace of the outside world.

On behalf of the clergy, staff, and volunteers of the Basilica of the National Shrine of Mary, Queen of the Universe, we hope that you have found your visit an opportunity to be strengthened in the imitation of Christ and in faithful service to that King whom "to serve is to reign".

The Basilica operates on the support of its visitors as it is not a parish but a ministry to pilgrims to the Orlando area.

Contactless offertory contributions can be made online at [www.mqus.org](http://www.mqus.org) or by scanning the QR code.



**Sunday, April 18**  
*The Third Sunday of Easter*

## ORGAN PRELUDE

Easter Carol  
*Alice Jordan*

## PRELUDE (10AM, 12PM)

If Ye Love Me  
*Philip Wilby*

## ENTRANCE

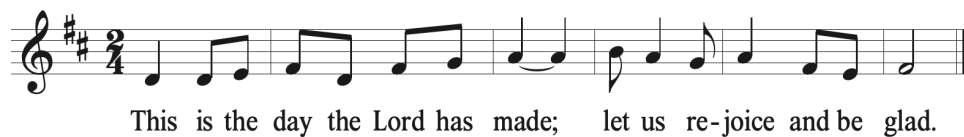
Jesus Is Risen



1. Je - sus is ris-en! Let us sing! Praise to the ev - er - liv - ing  
2. On this most ho - ly day of days, Let us to - geth - er sing his  
3. To God the Fa - ther let us sing, To God the Son, our ris - en  
King! Al - le - lu - ia! Al - le - lu - ia! Praise him in song, ye Ser - a -  
2. praise! Al - le - lu - ia! Al - le - lu - ia! Raise joy - ful voic - es to the  
3. King! Al - le - lu - ia! Al - le - lu - ia! And e - qual - ly let us a -  
1. phim! Praise him with joy, ye Cher - u - bim! )  
2. sky! Sing out, ye heav - ens, in re - ply: } Al - le - lu - ia! Al - le -  
3. dore The Ho - ly Spir - it ev - er - more! }  
1-3. lu - ia! Al - le - lu - ia! Al - le - lu - ia! Al - le - lu - ia!

## RESPONSORIAL PSALM

Psalm 118



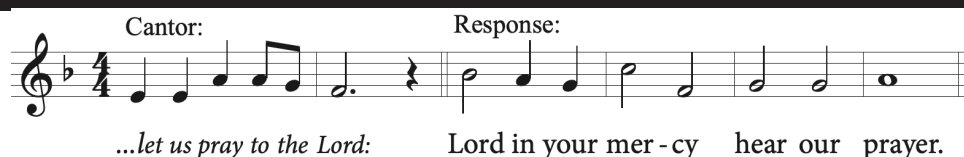
This is the day the Lord has made; let us re-joice and be glad.

## GOSPEL ACCLAMATION



Al - le - lu - ia, al - le - lu - ia, al - le - lu - ia.

## UNIVERSAL PRAYER



Cantor: Response:  
...let us pray to the Lord: Lord in your mer - cy hear our prayer.

## PREPARATION OF THE ALTAR (6PM, 8AM)

The Strife is O'er

### Refrain



### Verses



1. The strife is o'er, the bat - tle done;
2. The pow'rs of death have done their worst;
3. On the third day Christ rose a - gain,
4. He closed the yawn - ing gates of hell;
5. Lord, by the stripes which wound - ed you,



Now is the Vic - tor's tri - umph won! Songs of re -  
But Christ their le - gions has dis - persed. Let shouts of  
Glo - rious in maj - es - ty to reign. O let us  
The bars from heav'n's high por - tals fell. Let hymns of  
Free from death's sting your ser - vants too, That we may



joic - ing have be - gun. Al - le - lu - ia!  
ho - ly joy out - burst. Al - le - lu - ia!  
swell the joy - ful strain. Al - le - lu - ia!  
praise his tri - umph tell. Al - le - lu - ia!  
live and sing to you. Al - le - lu - ia!

## PREPARATION OF THE ALTAR (10AM, 12PM)

O Sacrum Convivium  
*R. Remondi*

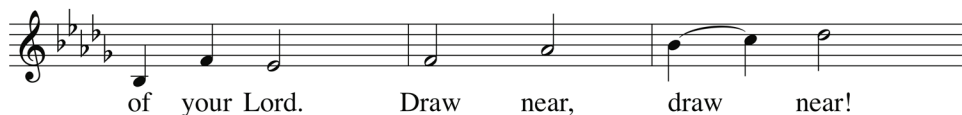
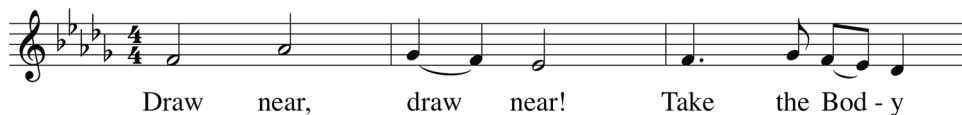
## COMMUNION PROCESSION (10AM, 12PM)

Jubilate Deo  
*attrib. Wolfgang Amadeus Mozart*

## COMMUNION PROCESSION

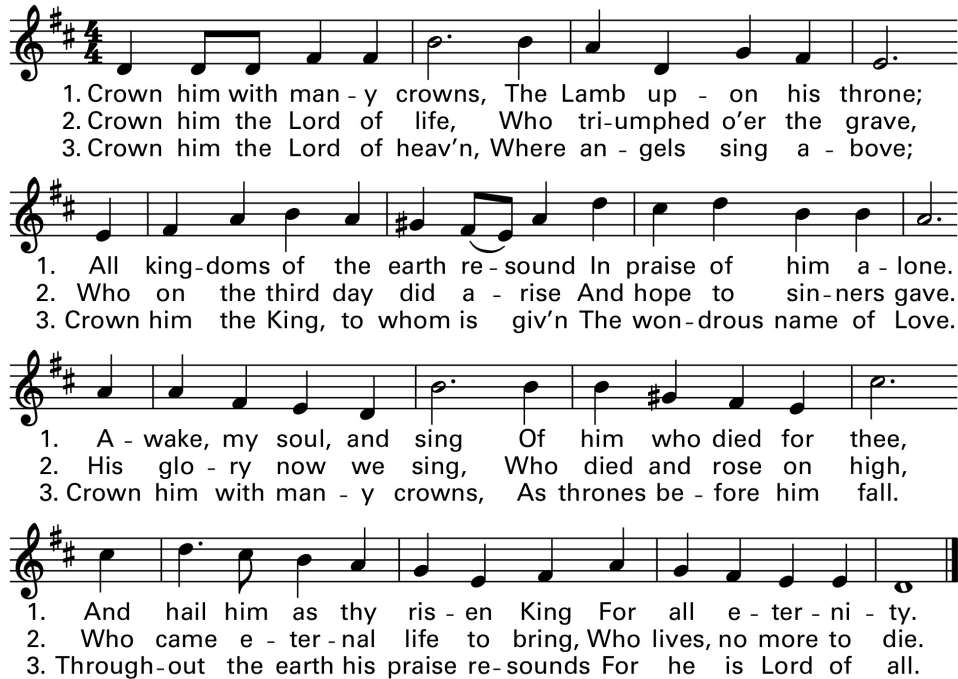
Draw Near

### Refrain



**CONCLUDING RITE**

**Crown Him With Many Crowns**



1. Crown him with man - y crowns, The Lamb up - on his throne;  
2. Crown him the Lord of life, Who tri-umphed o'er the grave,  
3. Crown him the Lord of heav'n, Where an - gels sing a - bove;

1. All king-doms of the earth re-sound In praise of him a - lone.  
2. Who on the third day did a - rise And hope to sin-ners gave.  
3. Crown him the King, to whom is giv'n The won-drous name of Love.

1. A - wake, my soul, and sing Of him who died for thee,  
2. His glo - ry now we sing, Who died and rose on high,  
3. Crown him with man - y crowns, As thrones be - fore him fall.

1. And hail him as thy ris - en King For all e - ter - ni - ty.  
2. Who came e - ter - nal life to bring, Who lives, no more to die.  
3. Through-out the earth his praise re-sounds For he is Lord of all.

We are working hard to make sure your visit to the Basilica is as safe as possible. Please help us by reviewing the following:

**FACE COVERING**

A face mask or shield covering your nose and mouth is required the entire time you are inside the Basilica, except during the reception of Holy Communion.

**SOCIAL DISTANCING**

Please remain seated to help us ensure proper social distancing.

**LIMITED CONTACT**

We're limiting physical contact throughout Mass. There will be no exchanging of the sign of peace and Eucharist will be distributed in your hands, rather than on the tongue.