



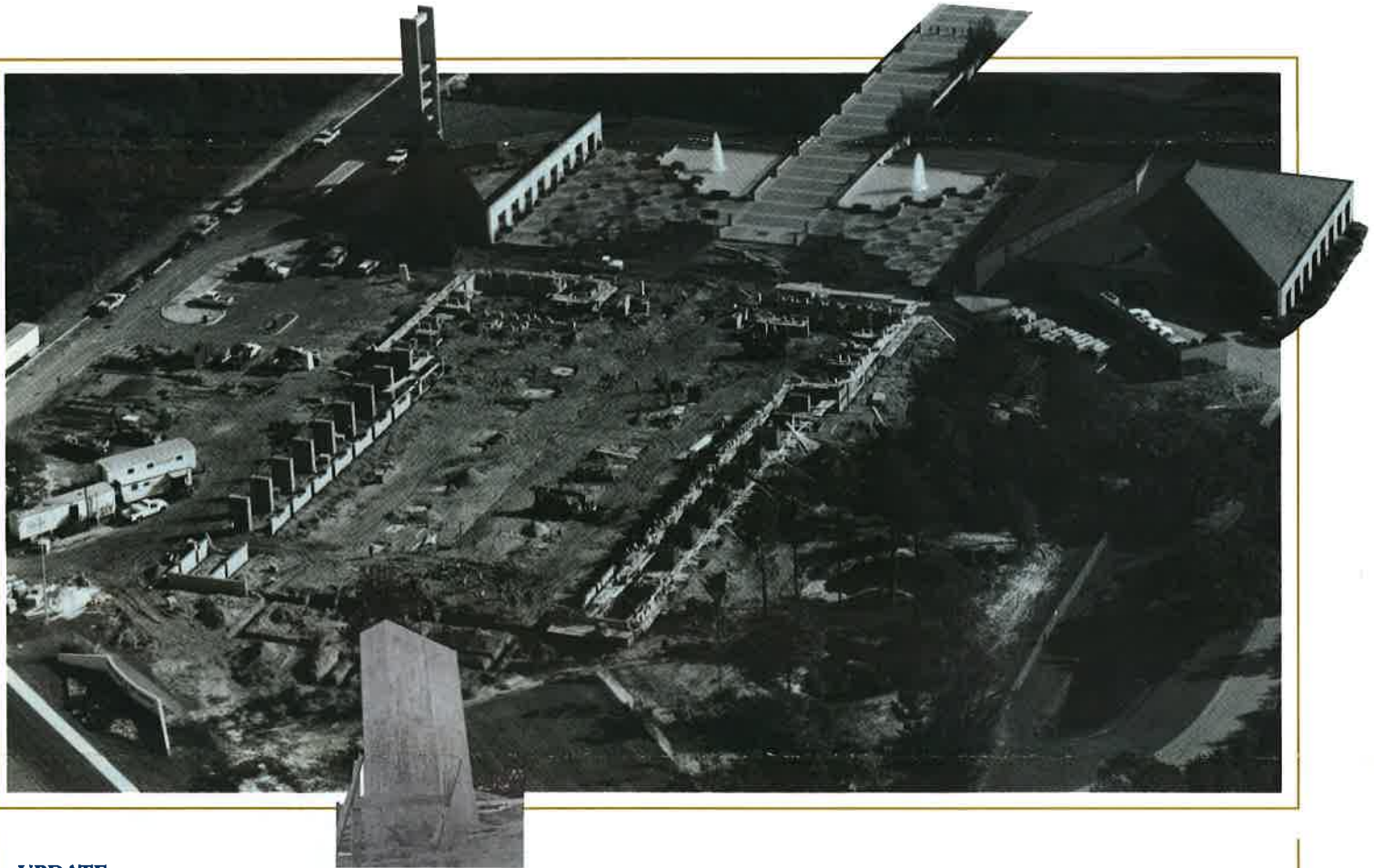
# —the magnificat

VOL. 6 NO. 1

WINTER 1992

A PUBLICATION OF

MARY, QUEEN OF THE UNIVERSE SHRINE



## UPDATE

### ***Setting New Pillars for the Faith— Shrine Church Construction Well Underway***

**Excitement grows as  
2,000-seat center for worship  
building program moves forward  
ahead of schedule**

ORLANDO, FL.—As the first massive, concrete pillars began to rise against the backdrop of a sunlit Florida sky this past November, the building program for the Main Church at Mary's Shrine entered its most exciting and most visually dramatic stage of construction.

In weeks to come, the new worship space will be largely outlined by these huge, two-story tall buttress columns—together with a pair of end walls, each stretching upwards of 80 feet high.

By mid-March, construction teams will begin to assemble the structural steel "shell" that will ultimately frame the entire length, breadth and height of the church itself. Completing this steel network in May, workers will mount

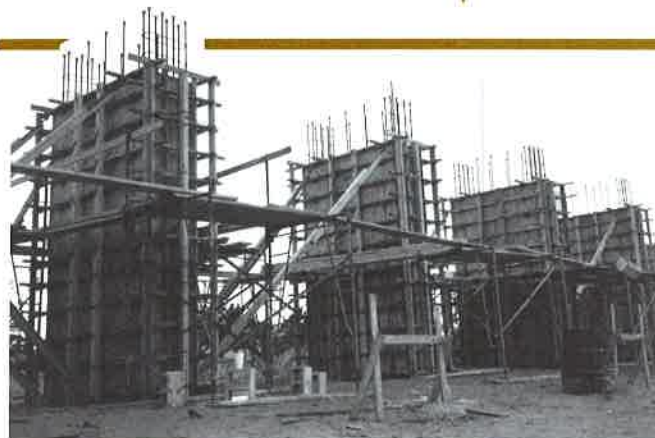
scaffolds atop the frame and then individually set in place as many as 75,000 fired clay roof tiles—the "crown" for Mary's Church funded, in great part, through the commemorative offerings of Shrine family members from across the world.

Early summer will see the focus of construction activity shift to the building's interior spaces.

Working aloft and below, amid what is expected to be a literal

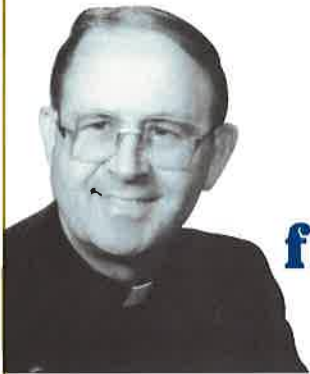
"forest" of scaffolding, plasterers and painters will finish the masonry wall surfaces throughout.

Craftsmen and stonemasons will begin to prepare the arched walls and columns that are to help define the central gathering space within the church. While skilled woodworkers and artisans will be called upon to provide customized wall moldings and ceiling panels, and to create intricate patterns for the tile flooring.



*When completed,  
these 23-foot pillars  
will act as buttresses,  
providing support  
for the walls and roof  
of Mary's Church.*

*continued on page five*



## A Message from the Director

January 1992

Dear Shrine Family Member:

Reading news accounts of declining vocations, parish closings and debate within the Church, you might come to conclude that there's not much "good news" left in the Good News.

Yet we must be doing *something* right.

Because while many Protestant denominations have seen their membership decline over the past year, the 1991 Yearbook of American and Canadian Churches reports the number of Roman Catholics has actually grown by more than two million.

So, too, while many of America's public schools are themselves earning failing grades in the classroom, Catholic schools nationwide continue to receive high marks from parents and educators alike.

At the same time—and despite a lingering recession that has forced many families to "tighten their belts"—Catholics continue to open their hearts, answering generously the call of the needy, the sick, the orphaned and abandoned.

Indeed, from the inner-city to rural America, both clergy and lay volunteers are today working on the "front lines of poverty," feeding the great many who are hungry, nursing the elderly poor, and giving hope and direction to troubled young lives.

It is, in fact, a reach of the heart that extends far beyond our shores—as Catholics support the efforts of missionaries who are bringing the Gospel message to peoples in Africa, Asia and South America.

Dear friend, I share these thoughts with you now as I watch each day the progress of construction on our new Shrine Church. For what we are working to build here together is more than a house of worship; it is an extension of our faith itself.

Through Mary's Shrine we can help strengthen the spiritual lives of countless men, women and their children tomorrow . . . bringing families closer to God and each other . . . encouraging vocations among the young . . . and opening new doors to faith for those whose hearts have been too long closed.

Being part of this effort is, I believe, a most rare and welcome privilege; and we feel ourselves especially privileged to have you with us in our work, our joy and our prayers.

Sincerely in Jesus and Mary,

Father F. Joseph Harte  
Director

To  
Our Lady  
of  
Lourdes

Members of the  
Mary, Queen of the Universe  
Shrine family  
are invited to share in  
the spiritual blessings  
of the Shrine's  
fifth annual Novena  
in honor of  
Our Lady of Lourdes

Your petitions  
will be placed as well  
on the altar of  
Our Lady's Shrine  
at Lourdes  
as part of the  
1992 Lourdes Pilgrimage  
of  
Father F. Joseph Harte

## Mass Schedule

### WEEKDAY MASSES

8:00 AM

### SATURDAY VIGIL MASSES

6:00PM

### SUNDAY & HOLY DAY MASSES

7:30AM • 9:30AM • 11:30AM • 6:00PM

The  
Magnificat

IS ISSUED PERIODICALLY FOR THE  
FRIENDS AND BENEFACTORS OF

MARY, QUEEN OF THE UNIVERSE SHRINE  
8300 VINELAND AVENUE  
ORLANDO, FLORIDA 32821  
(407) 239-6600

## LOURDES

# Images of Faith, Meditations of the Heart—

LOURDES, France—

However long the distance we may travel, a pilgrimage is, most of all, an “interior journey”... a journey of the heart.

The tradition itself began many centuries ago as Christians—stirred by a longing to walk among the paths and places made sacred by the presence of Jesus—would venture forth, prayerfully, to visit the Holy Land.

In later years, the faithful began seeking out the burial places of saints and martyrs as well, creating shrines in their honor.

As the Church grew in stature and influence through the centuries, these devotional journeys of the faithful began to attract an ever larger following and, increasingly, they would come under the direct supervision of Rome and the bishops. The Shrine of St. Thomas Becket at Canterbury, England was designated a “major pilgrimage,” as were visits to such other holy sites as The Shrine of the Magi at Cologne, Germany, the Church of St. James at Compostela, Spain and, of course, The Eternal City of Rome.



Through the centuries, various shrines would grow and then decline as sites for popular worship. Wars swept Europe and the Middle East. Boundary lines were redrawn. And new routes of access had to be established so that pilgrims could journey in relative safety.

But through each generation, and today more than ever, there has remained a steadfast devotion to the Blessed Mother—one that continues to find expression in pilgrimages to Marian Shrines worldwide. And among these holy places—from Guadalupe in Mexico, to Fatima, the famed village in West Portugal—the most celebrated of all is, perhaps, Lourdes.

You come as a pilgrim. And here, in the shadow of the Pyrenees Mountains of southern France, you walk among the faithful.

You are drawn to the Grotto of Massabielle, a place upon the banks of the river Gave where the Blessed Mother appeared 18 times to a young peasant girl named Bernadette Soubirous between February 11th and July 16th in the year 1858. Your eyes are lifted up along the grotto wall to The Statue of Our Lady which depicts the Apparition as she was when she first made herself known to Bernadette.

You reflect upon the love of our Blessed Mother, who came again and again to Lourdes, bringing with her the lessons of faith—humility, prayer and penance—and the promise of joy everlasting. Indeed, standing there in the Grotto, you recall her words to Bernadette: *“I cannot promise to make you happy in this world but in the other.”*

At the back of the Grotto is the miraculous spring that burst forth under the fingers of Bernadette when she scraped the earth as the Lady in White directed. You taste the cool mountain water, and you recall not only the many who have been cured here but that in God, all things are possible.



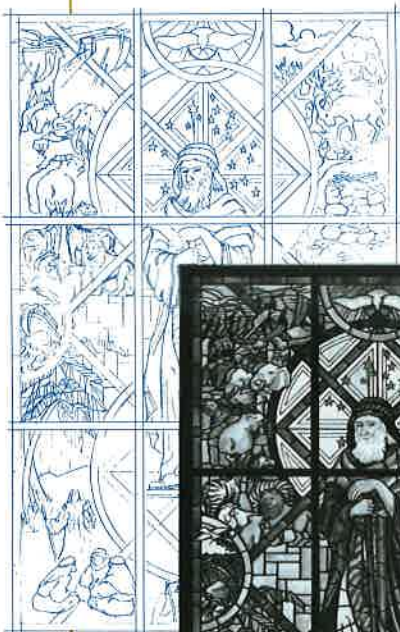
## MAGNIFICAT WINDOW

# The Flood and Abraham

A Second Magnificat Window for Mary's Shrine; stained glass artists at The Judson Studios begin preparations for Third and Fourth Windows: *“Prophecy and the Incarnation”* and *“Saints of the Church in North America”*

ORLANDO, FL.—While the frame begins to rise for the Main Church at Mary's Shrine, *“The Flood and Abraham”*—second in a series of 14 Magnificat Windows that will illuminate the enduring message of God's love for humankind—is today being prepared for its place upon the interior wall of the church.

This new window is dominated by the imposing figure of Abraham, shown as a desert wanderer, staff in hand. According to Walter Judson, who heads the noted Judson Studios design firm that is creating the Magnificat Windows series for Mary's Shrine, Abraham is pictured here looking out upon eternity—recalling for us God's enduring promise to our fathers, to Abraham and his children.



## Reflections on a Pilgrimage to Lourdes



You enter the Basilica of the Immaculate Conception, built by the People of God in answer to Our Lady's request that a chapel be constructed at the Grotto. In the dark of the church, your eyes fix upon the sunlit, stained glass windows which tell the story of Lourdes, from the first Apparition through the crowning of Our Lady of Lourdes in 1876. And you pray.

You walk among the faithful and, at the base of a hill, you come upon an angel cast in stone. He bears a heavy cross and points, invitingly, up the hill. You follow the path until you reach a grouping of metal-wrought statues; and you first glimpse the figure of Jesus

being presented by Pilate to the crowd. "*Behold the man;*" the words, unspoken, hang in the air. As you move among the 15 Stations which comprise The Way of the Cross at Lourdes, you cannot help but dwell upon all that Christ suffered for us in those, His last days. And you think back upon the angel, who was of stone, but whose invitation "*to walk in the path of Jesus;*" was for the heart, the human heart.

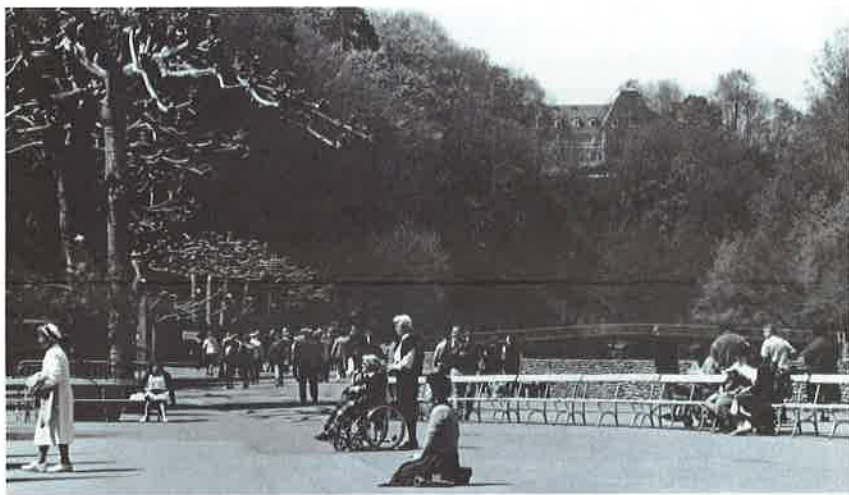
You make way for the sick who come on crutches, in wheelchairs, or in the arms of those who love them. You are inspired by the volunteers, young and old, who give of themselves to tend the crippled,

the old and the dying. And you are glad for a faith that calls up the best from within each of us.



You have seen it several times before, this dark, old tree, its limbs like stumps, so void of life. Why, you ask yourself, should this gaunt, unhappy tree be left standing so near the place where Bernadette first looked upon our Lady? Why, in this grotto of hope, should hopelessness have such a monument?

And yet, as you draw closer, you see upon its lifeless branches a bud or two; the beginnings of a leaf, perhaps, or a flower. And you know then why this tree remains: For it reminds us that in death there is born new life; and in life itself there is hope, born anew each day.



In the adjoining window panels, we witness the unfolding story of Genesis: from Abraham greeting the mysterious strangers, to a laughing Sarah, the altar made ready for Isaac's sacrifice, the Ark and the vision of Jacob's ladder. And as the story unfolds, we reflect upon all that the Lord asks from us... and all that He promises in return.

### The "Prophecy" Window

Third in the order of stained glass windows being created, though actually sixth in terms of its placement among the Magnificat Windows in the Main Church, is "*Prophecy and The Incarnation.*"

At the center of this rich, nine-panel tapestry of light and color is the boy Jesus; behind him,

Mary, her hands resting lovingly on his shoulders.

Here, symbolically, is the Incarnation of Jesus as fully human. It is a depiction that calls to mind a host of images: among them, the child born of Mary in a Bethlehem stable, and the young son who was to grow in both "wisdom and stature." A dove, held in the boy's hands, suggests innocence; while the dove itself, symbolizing the Holy Spirit, reminds the faithful of the prophecy in Joel (2:28-29) that God will pour out His Spirit upon all.

Surrounding the central figure of the boy Jesus is a kaleidoscope of colorful events drawn from the Old and New Testaments. A shepherd appears carrying a sheep; a scene that suggests both the origin of the House of David and Jesus, as the Good Shepherd.

There are images of the prophet Jonah, emerging from the mouth of a fish, and of John the Baptizer. Also portrayed are the Presentation in the Temple, the feeding of the multitudes, the healing of a blind man and, finally, the symbols of the Transfiguration, flowing with flame.

### North American Saints

Number 13 in the placement of Magnificat Windows will be "*Saints of the Church in North America*"— a celebration of Christian faith in the New World.

Depicted here, among others, are Katherine Drexel, the first American-born saint, John Newman, Kateri Tekawitha, Frances Xavier Cabrini, Father Damien of Molokai, Junipero Serra and figures of the Jesuit martyrs.

## A Looking Glass for the Soul— The Art and Vision of Kenneth vonRoenn, Jr.

LOUISVILLE, Ky.—When the architects and leadership council for the Shrine's building program began the process of commissioning liturgical art for the Main Church, one of their first approaches was to Kenneth vonRoenn, Jr., president of Architectural Glass Art, Inc. in Louisville, Kentucky.

A graduate of the Yale School of Architecture with more than 30 major commissions to his credit—and the 1987, 1989 and 1990 Grand Prize winner of The Guild American Crafts Award—vonRoenn is among the most innovative of today's art glass designers. His work includes commissions from the American Shakespeare Theater in Connecticut and the St. Louis International Airport as well as churches, universities and other public buildings from New York to California, Oregon and Alaska.

For vonRoenn, who is designing windows for the Daily Mass Chapel at Mary, Queen of the Universe Shrine and is collaborating with sculptor Jerzy Kenar on several other Shrine projects, stained glass does more than stimulate the visual senses. "It stirs us emotionally," he

writes, "toward a more reverential sensitivity, encouraging introspection and contemplation."

In developing his concept for the Shrine Chapel Windows, vonRoenn began with three primary objectives: The windows, he feels, should help create a restful atmosphere, encourage private prayer and "reference" Mary as Queen of the Universe.

To achieve his ends, vonRoenn is creating a panoramic view of the heavens—an imagery closely associated with Mary's celestial Queenship—that will help remind worshippers of the splendor and nobility of God's creation. At the same time, suggests vonRoenn, a predominance of dark blue in the windows should give the Chapel a "quiet feeling" that will encourage meditation and prayer.



"I designed the windows with three primary objectives."

—Kenneth vonRoenn, Jr.

### UPDATE

continued from page one



As work progresses on the interior walls, ceiling and floors, plumbers, electricians and audio specialists will arrive on-site to install the complex arrangement of pipes and fixtures, lighting, power and other mechanical systems that are essential to the operation of a major public facility. In fact, the new church has nearly 150 separate blueprints—technical plans that detail everything from wiring and electrical sockets to plumbing lines, door and window particulars, fire alarms and security systems.

Yet the work of creating this important new gathering place for the People of God has not been confined to the construction team, craftsmen and technicians at the building site. It is, instead, an effort that continues to involve a number of America's most noted liturgical artists.

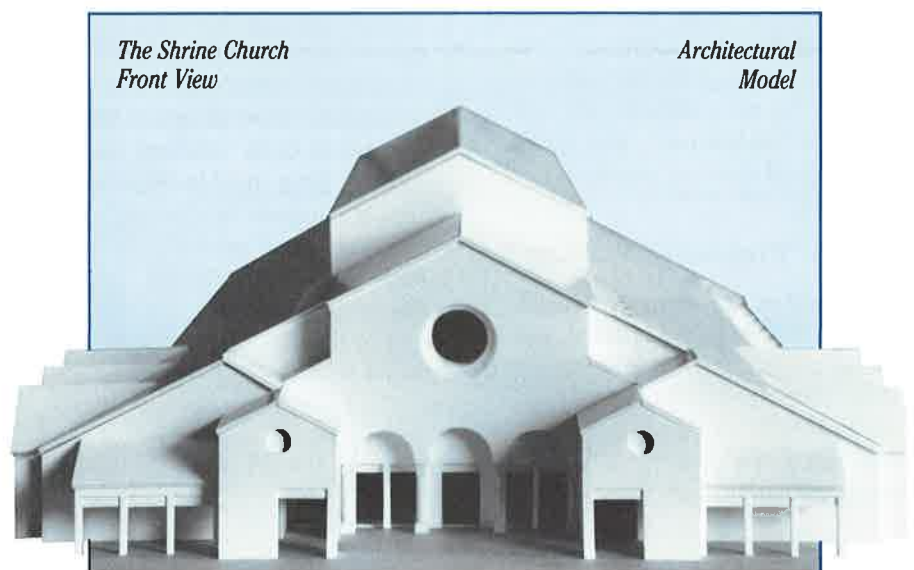
In his Chicago art studio, for instance, celebrated sculptor Jerzy Kenar—who created the distinctive and inspiring *Mother and Child* bronze centerpiece for the Shrine's Outdoor Chapel—is today refining his concepts for several

projects within the new church, including a Holy Water Font that will grace the narthex, or entrance hall.

Some 300 miles southeast of Chicago, in the production facilities of Louisville's Architectural Glass Art, Inc., award-winning designer Kenneth vonRoenn, Jr. has already developed both a theme and first sketches for the windows of the new Daily Mass Chapel. While at California's Judson Studios—the renowned design firm that created chapel windows for the Capitol Building in Washington, DC—work is now underway on "Prophecy and the Incarnation," second in a series of 14 Magnificat Windows that will illuminate Mary's Church.

In choosing to glorify God and illuminate the many graces of Mary through such works of religious art, the Shrine is today echoing Pope John Paul II's call upon the bishops to "do everything so that more works of truly ecclesial quality may be produced."

Indeed, according to Shrine Director, Father F. Joseph Harte, "it is our hope that these unique and magnificent images of faith, sacrifice and redemption will enrich the lives and enrapture the hearts of all who visit with us, refreshing every pilgrim, parent and child, and drawing each to a deeper, more personal union with God."



The Shrine Church  
Front View

Architectural  
Model

## To Be Always Remembered in the Building of this Great Work of Faith

One of the true joys of this — the Campaign for Mary, Queen of the Universe Shrine — is the wide range of commemorative gift opportunities the Campaign makes possible. Such gifts afford the faithful the chance to forever link their own family name with this great undertaking — or to honor and perpetuate here the name of a loved one, living or deceased.

Ranging in price from \$50 to more than \$1 million, these commemoratives provide the donor a handsomely framed, individualized certificate of recognition and, in some cases, a beautiful plaque of recognition at the Shrine itself.

If you have not as yet been able to consider a named gift for your family — or should you wish to provide a special remembrance

for a loved one — Shrine commemoratives afford a lasting and most appropriate recognition for births, anniversaries and other milestone occasions, as well as enduring memorials for those dear to you who have been called home to God.

Described below are some of the Shrine's most popular giving opportunities.



### \$400 COMMEMORATIVE SANCTUARY STONE

Those who donate a marble Sanctuary Stone are helping to lay the foundations for the Shrine Altar — which will be the heart of the Church. On the Altar, Christ will be offered to the Father and will come present to His people. Appropriately, these contributors will each be recognized with a handsomely framed Certificate of Commemoration.

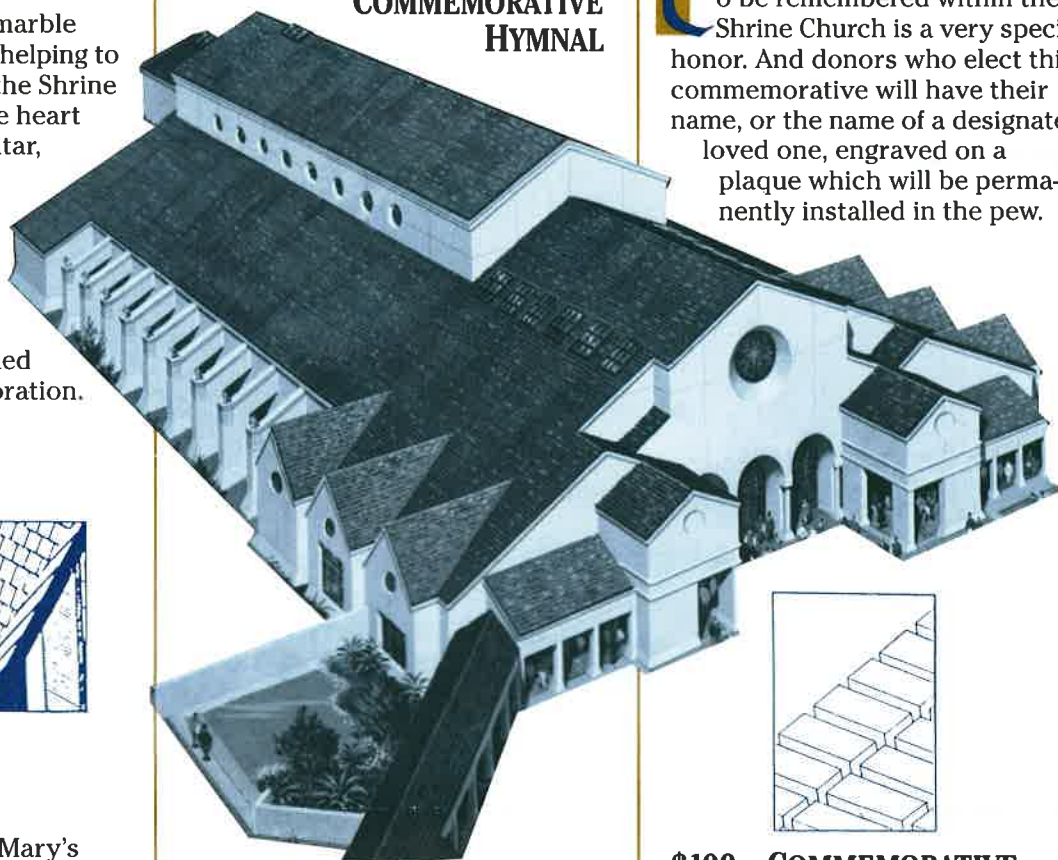


### \$50 ROOF TILE MEMORIAL

To provide a roof for Mary's Church — this is the most affordable of the Shrine's commemorative giving opportunities — and one of the most important tasks in the second phase of construction at Mary, Queen of the Universe Shrine. In addition, Roof Tile donors receive a special, framed certificate which attests to their personal role in building the Shrine Church.

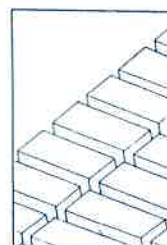
To dedicate a Shrine Hymnal is to inscribe your name or the name of a loved one, in perpetuity, among the songs of praise and thanksgiving through which God is glorified.

### \$250 COMMEMORATIVE HYMNAL



### \$900 COMMEMORATIVE PEW SEAT

To be remembered within the Shrine Church is a very special honor. And donors who elect this commemorative will have their name, or the name of a designated loved one, engraved on a plaque which will be permanently installed in the pew.



### \$100 COMMEMORATIVE COURTYARD BRICK

The courtyard connecting the Shrine Church, Evangelization Center and Mother & Child Outdoor Chapel will be brick-paved throughout. And donors of \$100 will receive a special certificate in their name, or in the name of a designated loved one, attesting to their commemorative contribution of a Courtyard Brick.

Perhaps the most beautiful way to honor the special relationship that exists between son and mother, or mother and daughter, is through a named plaque in the Shrine's Mother & Child Outdoor Chapel. Each of these individual

### \$1,000 MOTHER & CHILD PLAQUE

marble plaques, engraved with the name of a dear one, will be on permanent display at the Chapel — a testament of lasting familial love.