



# the magnificat

Vol. 19 No. 3

SUMMER 2008

A PUBLICATION OF

NATIONAL SHRINE OF

MARY, QUEEN OF THE UNIVERSE



## ***Year of Evangelization, Year of St. Paul***

*Most Reverend Thomas G. Wenski, D.D. Bishop of Orlando*

On Sunday, June 28, 2008, on the initiative of Pope Benedict XVI, the Catholic Church throughout the world began a special Jubilee dedicated to St. Paul to celebrate the 2000th anniversary of his birth.

Jesus was for St. Paul – as he should be for each one of us – the center of his life: His identity was shaped by his encounter with Christ. In fact, after his encounter with Christ on the road to Damascus, this one time Pharisee of Pharisees and persecutor of Jesus' followers known as Saul assumed a new identity taking the name Paul, and with that new identity, a new mission: to bring the gospel to the nations.

St. Paul, although not one of the original twelve, counted himself as one of the Apostles. He too was called directly by Christ – and in that call he came to recognize how closely Christ identifies himself with his people. Much of our understanding of the

Church as the Body of Christ comes from St. Paul's own reflections on this mystery.

Of all the apostles, Paul is perhaps the best known – and his success in bringing the gospel to the gentiles until his martyrdom in Rome – decisively orientated the course of Church history to the present day. In the Acts of the Apostles, St. Luke recounts the drama of his conversion and the tract of his missionary journeys. In his zeal to spread the gospel, he wanted to become “all things to all men” (1 Corinthians 9: 22) and so he was able to step outside the cultural confines of his Jewish upbringing to open himself to other cultures. He recognized that the gospel with its universal message of salvation was not foreign to any culture and that every people, every nation was fertile soil in which the gospel could take root.

Of course, in addition to what St. Luke tells us about Paul in the Acts of the Apostles, it is Paul himself who

reveals to us his personality and thought in his epistles. He is the most prolific writer in the New Testament canon – and most Sundays our liturgies are enriched by a reading taken from one of his epistles.

It would be difficult to overstate the influence of St. Paul in the development of our Christian faith. However, it is always Christ, crucified and risen from the dead, that St. Paul preaches – and not Paul. For him, to live was Christ. For this reason, we do well to observe this Year of St. Paul for he reminds us that our “*justification by faith*” is found “not by seeking oneself by oneself but in having received oneself from Christ and in giving oneself with Christ.” (cf. Papal Audience, Nov. 8, 2006).





## A Letter from the Rector

July 2008

It is my great pleasure to welcome you to this issue of the Magnificat. Since the beginning of my tenure in November, I have had the joy to meet so many of you in person here at the Shrine. I know too, that there are countless others whom I may never have the opportunity to greet personally, but as I walk through the Shrine, I am surrounded by reminders of your faith and love to Our Lord and His mother.

I want to tell you a little about myself, so that you too, may come to know me. I come from a large Irish Catholic family. There were eight children, two boys and six girls (my younger brother was called home to God at the age of one). My father worked as an insurance adjuster and my mother worked at home raising all of us. My parents built their children on a solid foundation of Sunday Mass, family rosary, and First Friday devotions. Today, my family is spread across the United States, from Seattle, Washington, to Tampa, Florida. As I grow older, I am astonished and thankful for what my Mom and Dad gave to all of us. They lived their faith in a joyful, service-centered life.

I attended the Chicago Archdiocese seminary and was ordained on September 18, 1971. My first assignment was in Fort Pierce, Florida. After about three years, I went to work in the Chancery, first as the Diocesan Director of Youth Ministry and later as Director of Vocations and Priest Personnel, a position I held for nine years. Over the course of the next twenty years I was pastor at two different parishes in Florida: Divine Mercy in Merritt Island for twelve years and Our Lady of the Lake in Deltona for eight years. I then returned to the Chancery as Director of the Office of Clergy Services. I then learned that I would be appointed as the second Rector of the National Shrine of Mary, Queen of the Universe effective November 1, 2007.

I looked forward to beginning my work at the Shrine with excitement and a little apprehension. I soon found out that nothing can really prepare you for running a Shrine dedicated to visitors from around the world. How could such a place run without a parish to support it? How would I make ends meet? I was told time and again that our Shrine family, both near and far, have always been there for us. I was told not to worry -- easier said than done!

Since those tentative first days, I have started to settle into my new position. One of the first things that became immediately apparent to me was the dedication to the Shrine and your support for its work. Looking back over the last eight months (can the time really have passed so fast?) I am still in awe of the devotion to our Lady that our Shrine supporters have. You truly are wonderful people who answer the call to support the Shrine's mission of evangelization. Thanks to your faithful support, our Shrine priests continue to proclaim the Good News with daily celebrations of the Eucharist and in the Sacrament of Reconciliation. Your generosity is the means by which we are able to continue to welcome thousands of visitors each year to their "home away from home."

I feel honored to have been selected to carry on the work that Monsignor F. Joseph Harte began. As many of you know, Monsignor is enjoying a well earned retirement. I wish to express my gratitude and appreciation for all that he has accomplished. His vision and faith formed the foundation that the Shrine was built on -- and what a solid foundation it is! But there is still work to be done, work that cannot be completed without your continued support. You are very much a part of this ministry. It is my sincerest hope that you will join me as I begin this new chapter in my life.

This year has been dedicated by Our Holy Father, Pope Benedict XVI, to St. Paul. St. Paul was one of the greatest evangelizers in our Church. In this issue of the Magnificat we have tried to show with words and photographs how the ministry of Evangelization continues to take place at the National Shrine of Mary, Queen of the Universe. I hope you enjoy it.

In Christ through Mary,

*Fr. Edward J. McCarthy*

Very Reverend Edward J. McCarthy, STL, D.Min.

## NOVENA

FRIENDS AND MEMBERS  
OF THE  
NATIONAL SHRINE OF MARY,  
QUEEN OF THE UNIVERSE FAMILY  
ARE INVITED TO SHARE  
IN THE SPIRITUAL BLESSINGS  
OF A NOVENA OF MASSES  
HONORING  
THE  
QUEENSHIP OF MARY

AUGUST 22,  
2008

## MASS SCHEDULE

### WEEKDAY MASSES

• 8:00 AM

• 12:05 PM

• 7:00 PM  
(MONDAY)

*Mass and  
Perpetual  
Novena  
in honor of  
the Miraculous  
Medal*



### SATURDAY VIGIL MASS

• 6:00 PM

### SUNDAY & HOLY DAYS

• 7:30 AM

• 9:30 AM

• 11:30 AM

• 6:00 PM

## A LEGACY OF FAITH

By means of a bequest,  
naming Mary, Queen of  
the Universe Shrine in your will,  
you can bequeath to a  
new generation a legacy of faith  
and gain for yourself  
the immeasurable blessing  
and deep personal satisfaction  
of knowing that your gift  
will help, in perpetuity,  
to further the work of  
Our Lord Jesus Christ.

## the magnificat

ISSUED PERIODICALLY FOR THE  
FRIENDS AND BENEFACTORS OF

NATIONAL SHRINE OF  
MARY, QUEEN OF THE UNIVERSE  
8300 VINELAND AVENUE  
ORLANDO, FLORIDA 32821  
(407) 239-6600



## Installation

ORLANDO – An historic event for the National Shrine of Mary, Queen of the Universe took place on December 16, 2007, before large a gathering of clergy, friends, and Shrine family members – as the Very Reverend Edward J. McCarthy was installed as the Second Rector of Mary's Shrine.

The church was full as the Most Reverend Thomas J. Wenski, Bishop of Orlando, Father Ed and other clergy from around the Diocese of Orlando processed to the altar to the sounds of the Shrine choir and orchestra singing O Come, O Come Emmanuel.

During the Mass, Bishop Wenski installed Father Edward J. McCarthy as the second Rector of the Shrine by inviting him to a renewal of his commitment to priestly service with

these words, "... in the presence of your bishop and God's holy people, are you ready to renew your own dedication to Christ as a priest of His new covenant?"

To which Father Ed answered simply,

"I am."

"... Are you resolved to unite yourself more closely to Christ and to try to become more like Him by joyfully sacrificing your own pleasure and ambition to bring His peace and love to your brothers and sisters?"

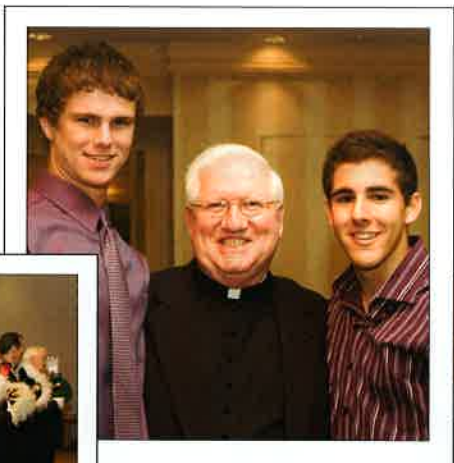
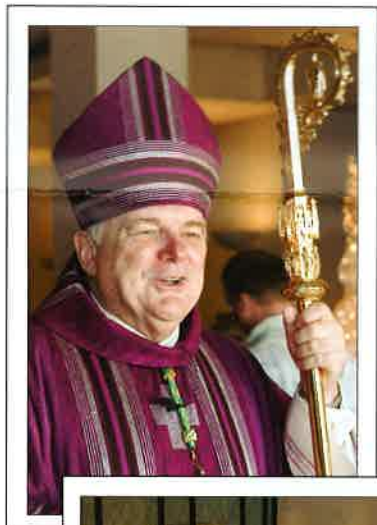
Again, Father answered, "I am."

Bishop Wenski continued as Father McCarthy promised further to be a faithful minister of the mysteries of God, to celebrate the eucharist and the other liturgical services with sincere devotion, and ... to imitate Jesus Christ, the head and shepherd of the Church, by teaching the Christian faith without thinking of his own profit, solely for the well-being of the people he was sent to serve.



As the mass neared conclusion, Father Ed took the opportunity to honor Our Lady, and his own parents, by placing three vases of roses in front of the signature statue of Mary, Queen of the Universe, as the church filled with the song Salve Regina, led again by the Shrine Choir.

Following the mass, Shrine family, friends and volunteers gathered at the Renaissance Sea World hotel for a brunch in honor of the Very Reverend Edward J. McCarthy and his appointment as second Rector of Mary's Shrine.



## Retirement of Monsignor F. Joseph Harte

October 31, 2007 marked the end of the first era of the Shrine with the retirement of the founding Rector of Mary's Shrine, Monsignor F. Joseph Harte. The occasion was celebrated in classic Monsignor style with a Mass of Thanksgiving at the National Shrine. Following the Mass, friends and family gathered at the Renaissance Hotel Ballroom to wish Monsignor well in his newest endeavor ... retirement.

As many of our Shrine Family know, the

tourist ministry that is the National Shrine of Mary, Queen of the Universe was established under the direction of Bishop Thomas Grady with the appointment of Father F. Joseph Harte in 1975. The first tourist masses were celebrated at the old Sheraton Twin Towers with the help of several very dedicated volunteers. Many faithful Catholics who met Father over thirty years ago at these hotel masses are still staunch supporters of Mary's Shrine.





# Events

ORLANDO – As he welcomed Shrine family members, friends and visitors gathered at the National Shrine of Mary, Queen of the Universe on December 16, 2007, the Most Reverend Thomas Wenski, Bishop of Orlando, spoke prayerfully to the congregation, asking that God bless the second Rector of the Shrine, Very Reverend Edward J. McCarthy, STL, D.Min.

Father Ed placed roses at the signature statue of Mary, Queen of the Universe in reverence to Our Lady and his parents, whom he honored for guiding him in his early years and encouraging him in his priesthood.

While these ceremonies were a major milestone in the life and work of Mary's Shrine, there were many more highlights for this welcoming ministry.

Christmas masses saw record numbers of visitors and, as usual, Midnight Mass was well attended. A new tradition was inaugurated when Father Ed invited all of the children present to accompany him as he placed the replica of the Infant Jesus in the straw-filled cradle of the life-size Nativity Scene in the Day Chapel.

In February Bishop Wenski celebrated a special mass to bless the newly installed statue of St. Peter which graces the entry into the Shrine Church. During the mass, Bishop Wenski led a small procession to the back of the church where he blessed the Shrine's newly installed work by artist Loura Dobbs (to the left of Bishop Wenski). The bronze statue of St. Peter, depicted with his arm outstretched toward the altar, encourages all to follow the Lord.





# Easter and Holy Week

Even larger gatherings of the faithful arrived in the next few months. During Easter Week alone the Shrine welcomed more than 40,000 visitors from across the Americas, Europe and Asia.

During the Chrism Mass, celebrated each year on the Wednesday of Holy Week, Bishop Thomas Wenski greeted hundreds of priests from across the Diocese of Orlando. The oils to be used in each parish during the year were carried in procession to be blessed during the celebration. Seven priests from the diocese celebrated fifty years of priesthood and joined Bishop Wenski at the altar.

At Holy Thursday service, those attending saw the washing of the feet of visitors and Shrine family members, by the priests of the Shrine, Father Edward McCarthy, Father Barry Dowd, and Father Martin Gerber, and Father Donald Mainardi.

On Good Friday, Shrine family members and visitors gathered for the Mary Stations, Reflections with Mary



Father Ed carries the Blessed Sacrament to the Altar of Repose

The Altar of Repose in the Day Chapel at the National Shrine of Mary, Queen of the Universe



on the Way to Calvary; the celebration of the Lord's Passion; and the Veneration of the Cross.

Holy Saturday celebrations were awe-inspiring with the lighting of the Easter Fire and candlelight procession throughout the Church. Visitors from across the globe gathered to greet the Risen Lord at Mary's Shrine – filling the church again and again on Easter Sunday, with others spilling out from a huge tent set up adjacent to the Shrine.



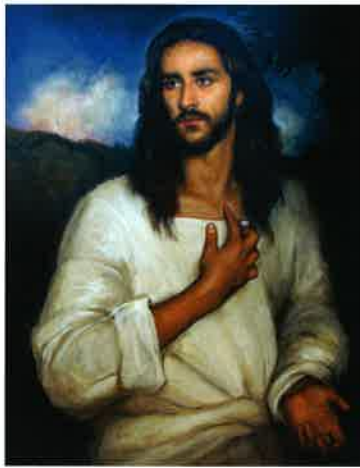


## Museum Spotlight...

Written by Catherine Davies – Director of Museums

One of the joys of working in the Shrine museum is being able to spend time with the artwork. Each piece in a collection is special in the message it sends to the viewer.

This past May through July - the message of faith was provided in an exceptional exhibit entitled *Redeeming Beauty: Religious Works of Contemporary Artists*. Installed within the museum gallery, this juried exhibition reflected a broad spectrum

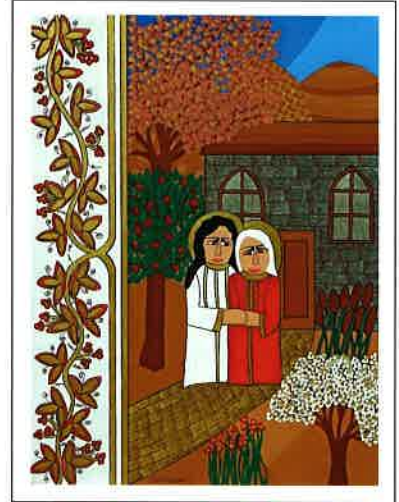


of Christian art which featured works in painting, drawing, glass and sculpture.

Inspired by the mission to revitalize the art of the Christian faith, this exhibit was sponsored by **The Foundation for Sacred Arts** based in the Washington, D.C. area. Through *Redeeming Beauty* and other important programs, it is the Foundation's hope "that artists will be encouraged to create works of art that will glorify God, build the Church, and convert hearts."

With the growth of our exhibition calendar, the Shrine museum also hopes to renew the pilgrim's spirit and evangelize our faith by inspiring and challenging the viewer to discover the importance of art.

It is during the summer months the Shrine museum will host *Seasons of Mary; an Artistic Journal* created by multi-faceted artist Linda P. Schäpper. Indeed, the folk-style images and



By Linda Schapper, *Mary Visits Elizabeth*  
oil on canvas, 2006, 24 x 18

vibrant color warmly welcomes the viewer to an intimate look at the details of the life of Our Mother.

It is through the mission of the Shrine museum that we are able to continue to support the arts and in doing so we ourselves are blessed by its message of faith. Pope Benedict XVI has said, "Christian-inspired art, architecture and music are not dead artifacts from the past, but are living treasures reflecting the beauty of God and the joy of being a child of God."

## What's in store ...

By Valerie Runci – Retail Director



More than mere souvenirs of a visit, the Shrine's gift shop provides an opportunity to take home a holy reminder to all who enter its doors. Contained within are treasures to be discovered: from the latest books to reproductions of Renaissance artists and practically everything in between. For its part, the gift shop continues to assist the Shrine in achieving its main mission of evangelization through the sale of unique religious gifts.

Our newest additions to the store are an assortment of fair trade goods created by artists from El Salvador, Venezuela, Mexico and Guatemala.

This thrilling new partnership benefits everyone involved. The crafts produced in a small village and sold to our shrine visitors through the gift shop can transform lives, both ours and theirs. The sale of fair trade goods provides the stepping stone that those in developing nations need to attain self-sufficiency. In addition to providing economic stability, these cottage industries also serve to preserve centuries old artistic traditions that might otherwise be lost. We, the consumers of these



goods, are inspired by the beauty of the craftsmanship. It is with great excitement that we welcome this unique opportunity to further the cause of evangelization to the thousands of visitors to Orlando.

The Gift Shop's dedicated volunteers and staff look forward to welcoming you on your next visit to Mary's Shrine. Open daily M-F 8:30 - 5:00, Weekends 8:30 - 8:00, always available at [www.maryqueenoftheuniverse.org](http://www.maryqueenoftheuniverse.org)



## SPECIAL EVENTS

# Upcoming Shrine Concert Series Announced

"Our churches have for a very long time played an important role in the cultural life of cities and towns.....Has it not been in the churches that this people has had its first aesthetic experiences in seeing the beauty of the building, its mosaics, paintings, statues or sacred objects; in hearing the organ music or the singing of the choir"

**Pope John Paul II**  
**May 22, 1987 - Address to the**  
**Congregation for Divine Worship**

The Roman Catholic Church, throughout the past two millennia, has been the world's most ardent supporter of the arts. It is in this spirit that the National Shrine of Mary, Queen of the Universe has sought to continue this tradition through specially commissioned statues, sacred art work as well as the Shrine Concert Series.

The Shrine Concert Series was inaugurated in 2001 and has grown to feature several outstanding, world-class performers as well as talented local artists. The 2008-2009 season promises to continue what has become a Shrine tradition.

On **Sunday, October 19, 2008 at 2:00 p.m.**, the series will kick off "with a bang" in a program entitled "The

**Rhythms of Music and Life,"** featuring nationally renowned percussionists and music educators, Beth and Danny Gottlieb. Beth and Danny will take their audience on a journey of rhythm throughout the ages, making musical rhythm fun, educational, high spirited, thought-provoking and audience friendly.

Celebrate "Christmas with the Shrine Choir" featuring the Shrine's professional choir-in-residence, along with brass, handbells and other surprises, all directed by Dr. William Picher. Including as always, the ever popular holiday sing-a-long, this annual tradition will take place on **Friday, December 5, 2008 at 7:30 p.m.**

Celebrate St. Patrick's Day early this year on **Sunday, March 15, 2009 at 2:30 p.m.** with the Emerald String Quartet in a program entitled "Celtic Threads!" Enjoy Celtic jigs, ballads and other arrangements by composer/violinist, Robert Kerr and the ESQ, joined by Shrine organist Dr. William Picher. The ESQ has been acclaimed at performances in Japan, Scotland, Peru, and throughout the United States.

The month of May is traditionally a time in "which the piety of the faithful has especially dedicated to Our



Blessed Lady" (Pope Paul VI: Encyclical on the Month of May, no. 1) At Mary's Shrine, Mother's Day is a treasured tradition. This year, bring Mom and join the Shrine Choir on **Sunday, May 10, 2009 at 2:30 p.m.** in a concert entitled "Ave Maria – A Celebration of Mother's Day," set against a backdrop of 10,000 roses in honor of mothers throughout the world.

Tickets for all Shrine Concert Series programs are \$9, and are available in the Shrine Gift Shop, or at the door. For more information, contact the music office at 407-239-6600 x317 or [shrinemusic@netpass.com](mailto:shrinemusic@netpass.com).



**Father Martin D. Gerber**

Father Martin D. Gerber was born August 15, 1949 in Chicago, Illinois, to Edith and Paul Gerber. He has one sister, Tina Oleksinski who resides in Colorado. Father Martin attended primary and high school in Metuchen, NJ and the suburbs of Maryland, and studied at Marietta College. Father

Martin went on to attend seminary at Catholic University of America in Washington, D.C. and St. Charles Borromeo Seminary in Philadelphia, PA. He was ordained to the priesthood at St. Matthew's Cathedral, Washington, D.C., on May 15, 1976. Father Martin served in various parishes in the Archdiocese of Washington, and as pastor at Our Lady's Church in Southern Maryland. He relocated to the Orlando diocese for health reasons and served at St. James Cathedral prior to coming to the National Shrine of Mary, Queen of the Universe.



**Father Barry Dowd**

Father Barry Dowd was born December 29, 1950, in Hillsdale, New Jersey, to John and Regina Dowd. He had one brother, John, who is deceased. Father Barry attended parish school at St. John the Baptist in Hillsdale, New Jersey; high school at Don Bosco in Ramsey, New Jersey; and, Holy Apostles College in Cromwell, Connecticut, before entering Mt. St. Mary Seminary in Emmitsburg, Maryland. Father Barry was ordained to the Priesthood for the Diocese of Burlington, Vermont, on June 4, 1982, by Bishop John A. Marshall, D.D. Father Barry served the Diocese of Burlington as a parish priest in Bethel, Barre, and Washington, Connecticut from 1982 until 1995. He has been assigned to Mary, Queen of the Universe Shrine since October 1995.

COMMEMORATIVE OPPORTUNITIES

## ***To be Forever Remembered in the Life of this Holy Apostolate, this 'House of Pilgrimage'***

Mary, Queen of the Universe Shrine provides a wide range of opportunities for Christ's faithful to be remembered, in perpetuity, within this holy apostolate designated by Pope John Paul II as: *"a house of pilgrimage."*

Through commemorative gifts, donors can forever link their name with the life and ministry of Mary's Shrine –

or perpetuate the memory of friends and loved ones within these sacred spaces.

Ranging upwards from \$50 to more than \$500,000, such gifts afford donors a certificate of recognition, individually inscribed on parchment stock, then set in a portfolio frame. Higher level gifts may be further recognized by a named Hymnal, engraved brick, marble plaque

or bronze inscription – permanently mounted and prominently displayed at the Shrine.

A uniquely enriching way to honor births, marriages and similar milestone events in the life of family and friends, Shrine commemoratives can also afford a marvelous spiritual remembrance for loved ones called home to God.



### **SHRINE TREE**

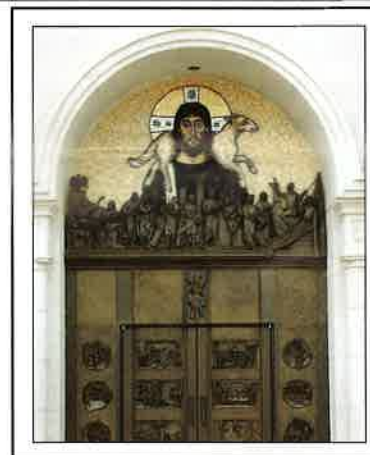
**\$ 800**

In dedicating one of the Shrine's majestic oaks, date palms, magnolias, or other stately trees, you will be helping to shape the spiritual landscape of Mary's Shrine – while establishing for family or friend, a "living memorial" that will gain identity, in perpetuity, by an inscribed bronze plaque at the tree's base.

### **BRONZE DOOR COMMEMORATIVE**

**\$ 500**

The Shrine's bronze doors renew the great tradition of magnificently-crafted Church portals, and donors who select this richly-historical commemorative option will see their names cast in bronze, and set permanently into one of the new entrance doors at Mary's Church.



### **FOOTSTEPS OF FAITH**

**\$ 300**

Footsteps of Faith donors are opening doors to the new Interactive Theatre -- a place where millions of visitors will explore Christianity's storied history and traditions. Each of these generous patrons is honored with a handsome certificate and their names are listed on a special plaque inside the Theatre entrance.

### **SHRINE CHURCH HYMNAL**

**\$ 250**

To dedicate a Shrine Hymnal is to inscribe your name or that of a loved one, in perpetuity, among the songs of praise and thanksgiving by which God is glorified. And each hymnal opens upon a bookplate, inscribed with the name of the Shrine donor who has generously made possible this "gift of praise and thanksgiving."



### **ROSARY GARDEN BRICK**

**\$ 200**

With brick tiles forming decades of beads, the Shrine's unique Rosary Garden walkway takes the shape of a rosary, complete with a centerpiece and cross. Donors are honored, in perpetuity – their names etched into a brick that is then set permanently into the walkway itself.

### **ROOF TILE MEMORIAL**

**\$ 50**

To provide a roof for Mary's Church remains the most affordable of the Shrine's named gift options; and Roof Tile donors receive a special, framed certificate that attests to their own personal role in helping to complete this major, new center for Christian worship, life and culture.

