



THE MAGNIFICAT

Souvenir Edition – February 20, 2011

A PUBLICATION OF THE BASILICA OF THE NATIONAL SHRINE OF MARY, QUEEN OF THE UNIVERSE

THE DREAM CONTINUES

Amid change, Mary's Shrine continues to shine as a beacon to the faithful who visit Central Florida. Now a minor Basilica, tourists from across the country and around the world continue their pilgrimages, and *The Dream Continues*.



The National Shrine of Mary, Queen of the Universe was designated as a minor Basilica by Pope Benedict XVI in June 2009. The solemnization was celebrated in August 2009, on the patronal feast, the Queenship of Mary. Here Father Ed, now the proto-rector of the Basilica, reads the declaration.



Archbishop emeritus John C. Favolora (left) and Archbishop Thomas Wenski applaud newly installed Bishop John Noonan.



The completed bronze sculpture of St. Peter was installed at Mary's Shrine.



Bishop John Noonan was installed as Orlando's newest Bishop at the Basilica on December 16, 2010.



The Coat of Arms of Pope Benedict XVI is installed in the Narthex of the Basilica.



Designed by a team of staff members: Father Ed McCarthy, Joseph Buranosky, Valerie Runci, and Catherine Davies, along with volunteer Matt Carpenter, the Coat of Arms hangs in the Narthex of the Basilica of the National Shrine of Mary, Queen of the Universe.

A Letter From the Proto-Rector

February 20, 2011

Dear Friends,

Someone once wrote: "we call him priest this day because someone once called him son, brother, friend."

This celebration would be inconceivable without each of you. Because of you the mystery of the priesthood, the mystery of love, the mystery of family, and the mystery of friendship have become a very real and comforting part of the very fiber of my life. For forty years now, I have had the great fortune of being a living example of God's mercy and providence.

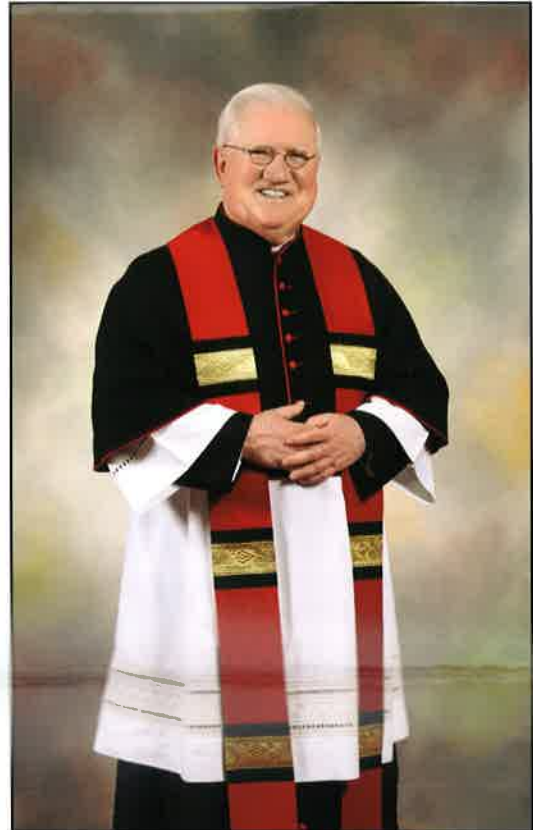
I have the great privilege of being very well educated by the church I love. I have had the honor of celebrating the Sacred Mysteries of the Lord Jesus with God's people, preaching the Sacred Word of the Lord, and of serving the people of God. I have been on assignments that have offered me both challenge and grace.

The church teaches us that by baptism we are called to holiness. I thank you from the very depth of my heart for helping me live out my baptismal commitment by being a priest of Jesus Christ. There has been, and continues to be, and hopefully will be in the future, a great sense of joy and peace in following the Lord Jesus as one of his priests.

I am so very pleased that you will be joining me on February 20th to celebrate my retirement.

May the great Mother of God continue to look after each of you and your loved ones.

Fr. Ed



THE DREAM CONTINUES

When the tourist ministry was conceived, we set out to Build the Dream and as construction on the Main Shrine Church began, it became necessary to Light the Path to Christ. With the arrival of Father Ed McCarthy as the second Rector, his mission was to make certain that The Dream Continues.

The Ombrellino at the Basilica is unique, hand-made and custom made, with a polished brass pole and bronze high-polish base. The eight panels, alternately red and yellow, are made of silk, and each of the attached eight shields is hand embroidered with a symbol: Papal Coat of Arms of Pope Benedict; St. Therese of the Little Flower; Venerable James McGivney, founder of the Knights of Columbus; Bishop Dorsey's Coat of Arms; Bishop Grady's Coat of Arms; Bishop Wenski's Coat of Arms; Mary, Queen of the Universe Coat of Arms; and Knights of Columbus Coat of Arms. Between each shield is placed a hand-knotted tassel in red and yellow.

The Basilica's Tintinnabulum is completely hand-made, using Our Lady of Lourdes as a beginning



point of the design concept. Centrally located in the brass mandorla is the statue of Our Lady of Lourdes on a piece of malachite, which matches the cabochon stone that is in the topcross, with a brass silver plated, fully functional bell. Both sides are adorned with seven roses, each with a small circuite in the center, symbolizing the seven sorrows and joys of Mary.

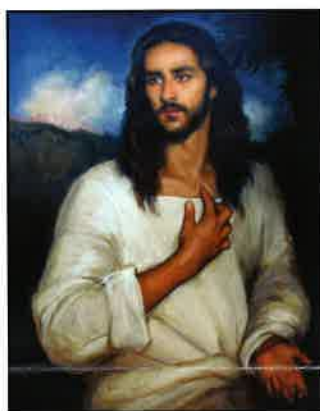


MUSEUM SPOTLIGHT

By Catherine Davies
Director of Museums

As the Shrine undergoes the transformation of our Rector retiring, there is no better time to reflect upon additions of artwork that the Museum has acquired during these past years.

"Madonna of the Rosary" is an original watercolor, with metal leaf and shell gold by artist Margaret Farr. This wonderful addition celebrates the glorious creation of nature and its ability to glorify the beauty of Our Lady.



Artist Matthew James Collins' oil painting "Jesus in the Garden of Olives," displays a mastery of technique that is influenced by Italian Renaissance and Baroque Art, yet his sensitivity to the subject is uniquely his own.

In order to "Continue The Dream" of developing the Basilica and Museum, we are reminded that there is always room for improvement. The Museum looks forward to pursuing our special mission of evangelization through art. So, we dream with open eyes and with our eyes wide open we are able to make it possible.

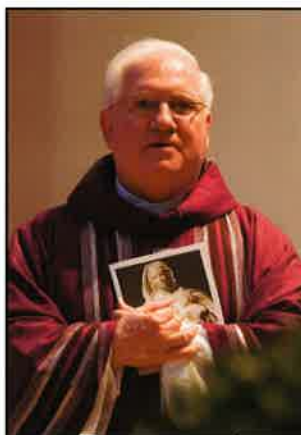
Thank you, Fr. Ed McCarthy, for sharing your dream!

THE DREAM for liturgical music at Mary's Shrine was of the highest artistic integrity, as evidenced by the establishment of the Basilica Choir. Under the leadership and inspiration of Fr. Ed, the music program has continued to expand and develop. The Basilica Choir now ministers at both the 9:30 a.m. and 11:30 a.m. Masses on most Sundays and major holy days. The Basilica Concert Series continues to grow. Of the five concerts in this season, three of them feature both

choir and chamber orchestra. This year will also mark our first performance of a full choral Mass with orchestra, in the context of the Holy Sacrifice of the Mass, which we hope will become an annual tradition. Outreach concerts have begun, which bring the artistry of the Basilica Choir to other churches in the diocese. The musicians of the Basilica will miss Fr. Ed's happy presence, hearty laugh and consistent support that we have enjoyed these past four years!



The Dream Continues to build a house of worship for visiting tourists to the Orlando area, with the appointment of Father Edward J. McCarthy, STL, D.Min., as the Shrine's second Rector. Father Ed celebrated his first mass at Mary's Shrine on November 1, 2007.



December 16, 2007, Father Ed was officially installed as the Second Rector of the National Shrine of Mary, Queen of the Universe, by then-Bishop Thomas Wenski. Here, Father Ed accepts this responsibility.



Deacons for the Diocese of Orlando are ordained at the National Shrine of Mary, Queen of the Universe.



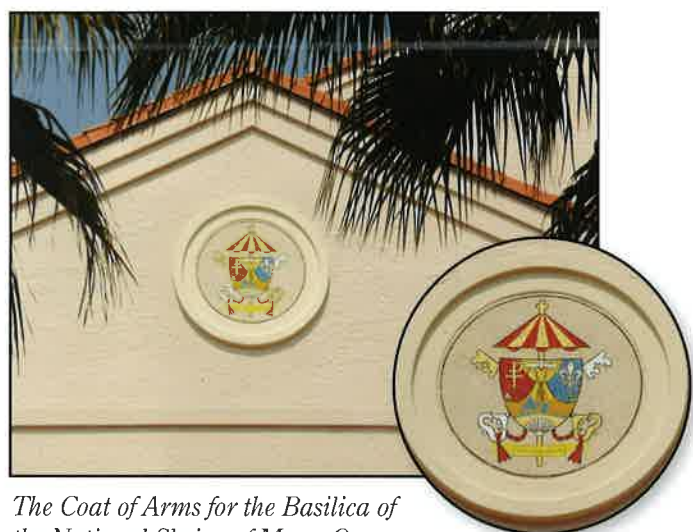
In October 2009, Msgr. Eduardo Chavez of Colonia Mexico, pictured here with Fr. Ed in front of the mosaic in the Universe Chapel, spoke at the Shrine on Our Lady of Guadalupe.



Father Ed greets pilgrims from Plant City, FL who walked to the Shrine in November 2009.



The bronze of the Pieta, #4 of an edition of 12 bronzes cast in 1982, is on display at the Basilica. The original plaster prototype is a precise cast of Michelangelo's original marble statue in St. Peter's in Rome. The bronze arrived in February 2010.



The Coat of Arms for the Basilica of the National Shrine of Mary, Queen of the Universe, was accomplished in mosaic by Jill Burkee and Giancarlo Biagi in Italy, and is placed to the left of the Basilica entrance.



The Coat of Arms of Vatican City, accomplished in mosaic by Jill Burkee and Giancarlo Biagi, is placed on the right of the entrance to the Basilica.

BASILICA BOARD OF ADVISORS

Very Rev. Edward J. McCarthy, STL, D.Min., Steve Bakich, Clarence Geis, Richard J. Kelley, Dorothy Lambert, James J. Nagy, A.I.A., Steve Valentine, George Voll, Thomas P. Moran



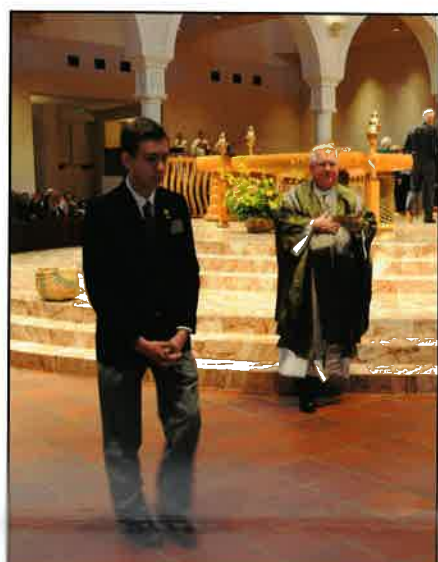
Mother's Day at Mary's Shrine is celebrated on that Sunday with a display of ten thousand roses, each representing mothers, grandmothers, daughters, nieces and loved ones honored by donors to the Basilica.



In May 2010, Archbishop Thomas Wenski celebrated his farewell mass at the Basilica before going to the Archdiocese of Miami.



Volunteers are essential at the Basilica, and we reach out to the younger members of our communities to become involved. Here father and son assist at Mass.



Father Ed chooses to bring the Eucharist to "those for whom it is a big deal to come to mass ... those in wheelchairs or with walkers ... and their caregivers those who struggle to come to Mass."



On Christmas Eve 2010, at the noon Mass, the Basilica welcomed the Three Kings of Juana Dios.



Christmas Eve 2010



On the feast of the Queenship of Mary, the patronal feast of the Basilica, at the anniversary Mass celebrating the one-year anniversary of being named a basilica, the faithful gathered for the Anointing of the Sick.



Each Sunday, Father Ed recognizes those who have served our country in the armed forces, and members of police and fire departments across the country, both those on active duty and our veterans. "...because of your sacrifice, we are free..."

COMMEMORATIVE OPPORTUNITIES

To Be Forever Remembered in the Life of this Holy Apostolate, this 'House of Pilgrimage'

Mary, Queen of the Universe Shrine provides a wide range of opportunities for Christ's faithful to be remembered, in perpetuity, within this holy apostolate designated by Pope John Paul II as: "a house of pilgrimage."

Through commemorative gifts, donors can forever link their name with the life and ministry of Mary's Shrine

— or perpetuate the memory of friends and loved ones within these sacred spaces.

Ranging upwards from \$50 to more than \$500,000, such gifts afford donors a certificate of recognition, individually inscribed on parchment stock, then set in a portfolio frame. Higher-level gifts may be further recognized by a named Hymnal, engraved brick, marble plaque

or bronze inscription — permanently mounted and prominently displayed at the Shrine.

A uniquely enriching way to honor births, marriages and similar milestone events in the life of family and friends, Shrine commemoratives can also afford a marvelous spiritual remembrance for loved ones called home to God.



COURTYARD BENCHES

\$2,500

In dedicating one of the attractive wrought-iron benches in the courtyard of the Basilica, you will be helping to shape the spiritual landscape of Mary's Shrine by providing a place for quiet meditation or a peaceful rest in the midst of the Shrine complex, while establishing a memorial for family or friend, with an engraved plaque.

BRONZE PORTAL COMMEMORATIVE

\$750

The Shrine's bronze doors renew the great tradition of magnificently crafted Church portals, and donors who select this richly historical commemorative option will see their names cast in bronze, and set permanently adjacent to one of the new entrance doors at Mary's Church.



ROSARY GARDEN BRICK

\$250

With bricks forming decades of beads, the Shrine's unique Rosary Garden walkway takes the shape of a rosary, complete with a centerpiece and cross. Donors are honored in perpetuity — their names etched into a brick that is then set permanently into the walkway itself.

ROOF TILE MEMORIAL

\$50

To provide a roof for Mary's Church remains the most affordable of the Shrine's named gift options; and Roof Tile donors receive a special, framed certificate that attests to their own personal role in helping to complete this major, new center for Christian worship, life and culture.

MOTHER & CHILD PLAQUE

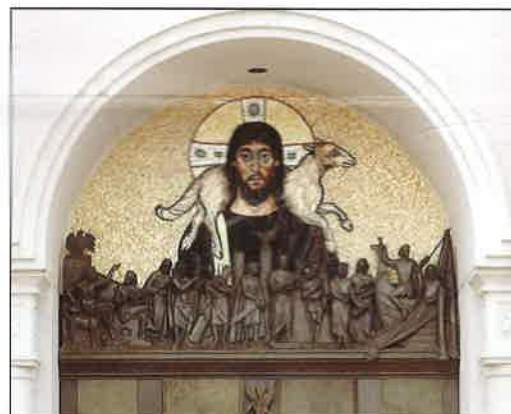
\$1,000

Honoring the bond that joins mother and child, family and friends, the Shrine's Mother & Child Outdoor Chapel commemoratives — each a green marble plaque hand-engraved in gold leaf — are testament to a love that endures.

COMMEMORATIVE PEW SEAT

\$900

To be remembered within the Shrine Church is a special tribute; and donors dedicating a pew seat will have their name, or that of a loved one, inscribed on an individual brass plate mounted on the polished wood of a Shrine pew.



FOOTSTEPS OF FAITH

\$300

Footsteps of Faith donors are opening doors to the new Interactive Theatre — a place where millions of visitors explore Christianity's storied history and traditions. Each of these generous patrons is honored with a handsome certificate and their names are listed on a special plaque at the Theatre entrance.

SHRINE CHURCH HYMNAL

\$225

To dedicate a Shrine Hymnal is to inscribe your name or that of a loved one, in perpetuity, among the songs of praise and thanksgiving by which God is glorified. And each hymnal opens upon a bookplate, inscribed with the name of the Shrine donor who has generously made possible this "gift of praise and thanksgiving."

